

Series 216

PN25 Brass Ball Valve with Rp Connections

Sizes: DN15-DN50

Series 216 Ball valves are designed for isolation service in Plumbing, HVAC and common liquid services compatible with the materials of construction. With Watermark & AGA approval they are ideal for potable domestic water and commercial installations.

Features

- Watermark & AGA approved
- Elastomer stem O-ring prevents stem leaks
- Bottom loaded blowout proof stem
- Machined chrome plated brass ball
- Full port design
- Lever handle standard, options of locking and butterfly handles

Pressure – Temperature

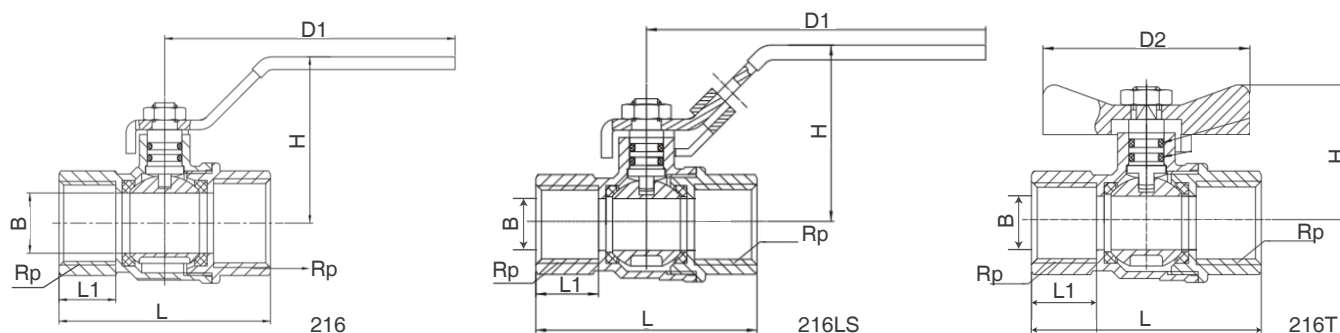
- Nominal Pressure: Fluids 25 bar (2500 kPa)
Gas 14 bar (1400 kPa)
- Temperature Range: Fluids 0°C ~ 90°C
Gas 0°C ~ 70°C

Material

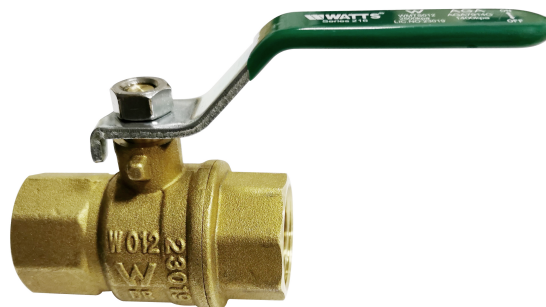
| NO. | Component | QTY | Material |
|-----|------------------|-----|-----------------|
| 1 | Bonnet | 1 | DZR |
| 2 | Seat | 2 | PTFE |
| 3 | Ball | 1 | DZR |
| 4 | Body | 1 | DZR |
| 5 | Stem | 1 | DZR |
| 6 | O Ring | 2 | HNBR/EPDM |
| 7-1 | Lever Handle | 1 | Carbon Steel |
| 7-2 | Butterfly Handle | 1 | Zinc Alloy |
| 8 | Nut | 1 | Stainless Steel |
| 9 | Handle Sleeve | 1 | PVC |
| 10 | Lock Ring | 1 | Carbon Steel |

Installation Dimensions

Female-Female Threaded: Lever, Locking and Butterfly Handle



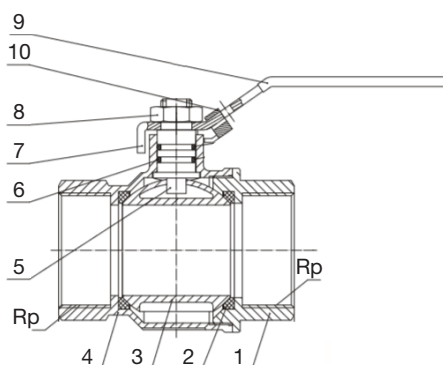
| Size | L | L1 | H | D1 | D2 | B |
|------|-----|------|------|-----|----|------|
| mm | mm | mm | mm | mm | mm | mm |
| 15 | 60 | 16.8 | 47.7 | 92 | 54 | 14 |
| 20 | 67 | 17.7 | 52.5 | 92 | 54 | 18.5 |
| 25 | 76 | 19.2 | 58.5 | 105 | 63 | 23.5 |
| 32 | 93 | 23.2 | 71 | 134 | - | 30 |
| 40 | 101 | 22.7 | 76.5 | 134 | - | 38.5 |
| 50 | 122 | 27.3 | 90 | 144 | - | 47 |



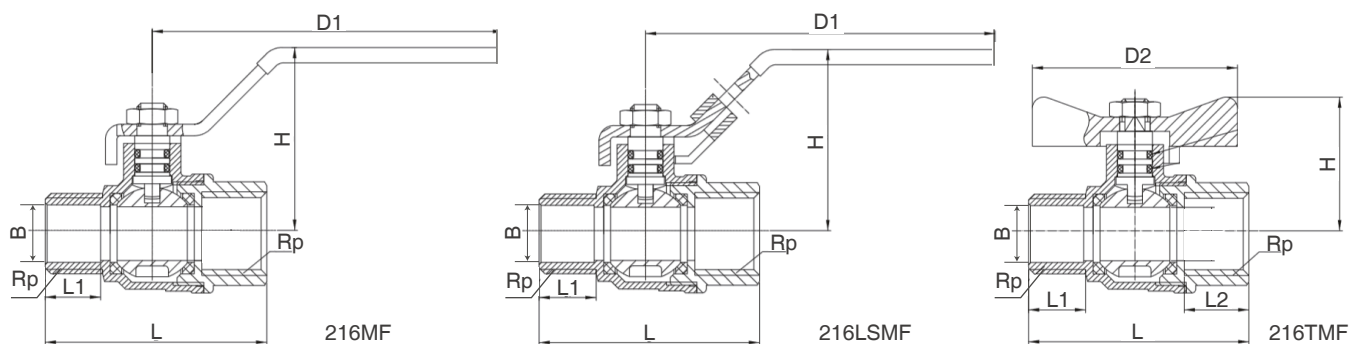
Specification

- Connections
Series 216 Rp to AS ISO 7.1
- Test Standard
Liquids WMTS012: 2018
Gas: AS4617-2018
- Working Medium: Non corrosive liquids and gas

Approval



Male-Female Threaded: Lever, Locking and Butterfly Handle



| Size mm | L mm | L1 mm | L2 mm | H mm | D1 mm | D2 mm | B mm |
|------------|---------|----------|----------|---------|----------|----------|---------|
| 15 | 58 | 15 | 16.8 | 47.7 | 92 | 54 | 14 |
| 20 | 65 | 16 | 17.7 | 52.5 | 92 | 54 | 18.5 |
| 25 | 75 | 19 | 19.2 | 58.5 | 105 | 63 | 23.5 |
| 32 | 91 | 21 | - | 71 | 134 | - | 30 |
| 40 | 99 | 21 | - | 76.5 | 134 | - | 38.5 |
| 50 | 120 | 25.3 | - | 90 | 144 | - | 47 |

Installation Instructions

1. Ensure the operating line pressure, temperature and fluid type is compatible with the valve's ratings and materials of construction.
2. Plumbing installers working on potable water systems must ensure they meet state licensing requirements.
3. Flush the pipework prior to installation of the valve to ensure all dirt and foreign material is removed.
4. Use only AS4020 compliant thread sealants, when used on potable water installations.