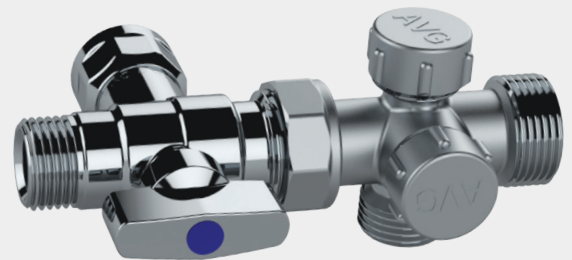
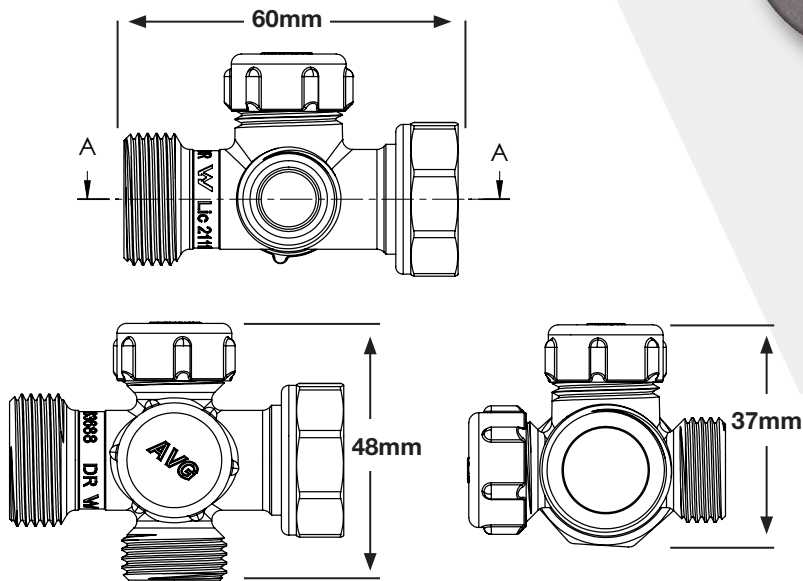


Ultra Manifold, MAN-15

FEATURES

- Watermark approved
- 3 x 1/2" 15mm connections
- 1 x 3/4" 20mm connection
- 2 x 1/2" 15mm caps
- Space saving design will free up space under sink
- Time saving solution to organising under sink connections

MAN-15 DIMENSIONS



FITS WITH BVT-15

DISCLAIMER: Every care has been taken in the preparation of these instructions, which have been issued as a guide only. Compliance with the requirements of local Authorities is required at all times. These requirements may change from time to time. Always be aware of the local requirements. Subject to any statutory obligations and manufacturers warranties no liability can be accepted for any losses, consequential or otherwise which may arise or be said to have arisen from relying upon the contents of this installation instruction as to the fitness of any particular product for any particular purpose, use or application. The Australian Valve Group Pty Ltd reserves the right to modify designs and specifications and to withdraw and introduce products at any time without notice.