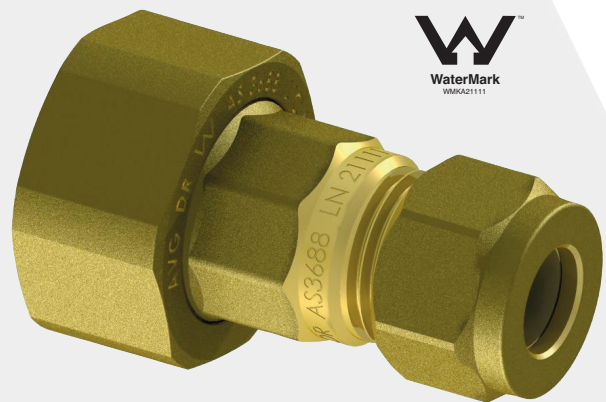


Pump Connection Kit, BFU25Q15C

AVG as a company is dedicated to developing new and innovative products to the plumbing industry designed with the plumber in mind.

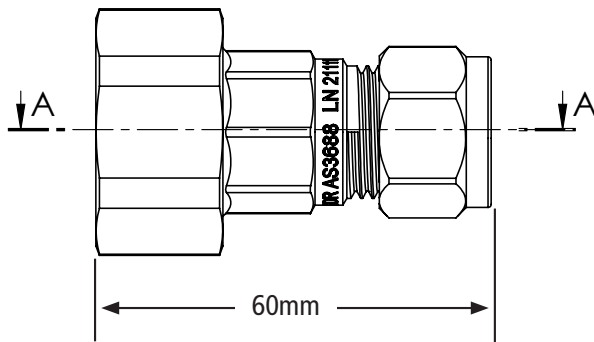
The Pump Connection Kit which consists of two BFU25Q15C adaptors has been developed as an addition to the ever growing range of solar valves and fittings available from AVG.

The two BFU25Q15C adaptors provided in the kit are designed to be connected to the 25mm male inlet and outlet connections of a circulating pump and include 15mm compression end connections. The connection to the pump is a 25mm loose nut and sealing washer designed to allow the easy removal of the pump for service or replacement.



BFU25Q15C

BFU25Q15C DIMENSIONS



DISCLAIMER: Every care has been taken in the preparation of these instructions, which have been issued as a guide only. Compliance with the requirements of local Authorities is required at all times. These requirements may change from time to time. Always be aware of the local requirements. Subject to any statutory obligations and manufacturers warranties no liability can be accepted for any losses, consequential or otherwise which may arise or be said to have arisen from relying upon the contents of this installation instruction as to the fitness of any particular product for any particular purpose, use or application. The Australian Valve Group Pty Ltd reserves the right to modify designs and specifications and to withdraw and introduce products at any time without notice.