

# Dual Check Valves, 2NV

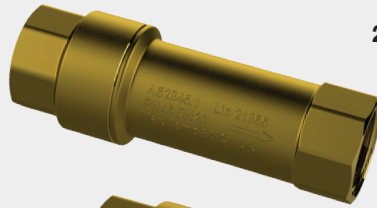
## 2NV

The AVG Dual Check Valve is designed to prevent cross contamination of non potable water into safe drinking water.

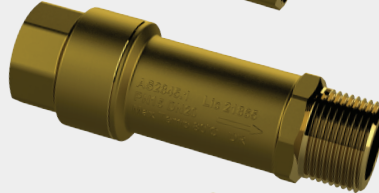
The two spring loaded check valves remain tightly closed until there is a demand for water down stream.

In the event that there is reverse of flow direction, the check valves will close and backflow is prevented.

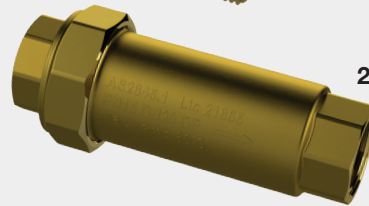
The AVG 2NV20-20F, 2NV20-20FM and 2NV25-25F Dual Check Valves provide protection in low hazard applications, like meter connections on domestic properties.



2NV20-20F



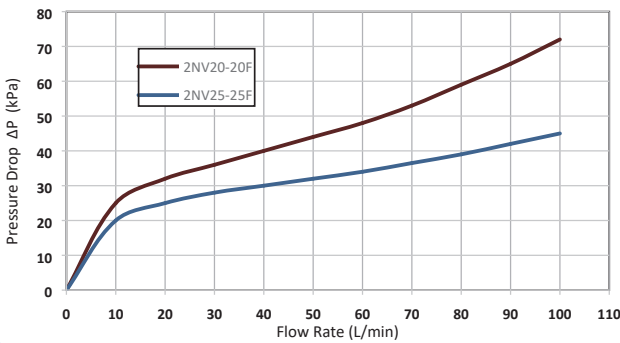
2NV20-20FM



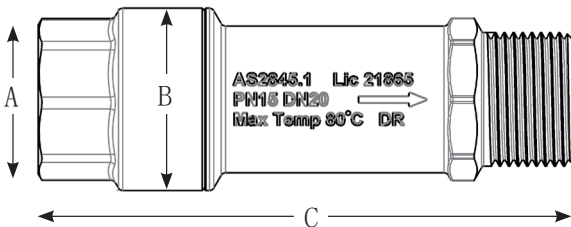
2NV25-25F

### PRESSURE COMPARISON

Flow Characteristics



### DUAL CHECK VALVE SPECIFICATIONS



### FEATURES

- D.R. Brass
- Suitable for vertical or horizontal application
- Independently operating check valves
- Maximum working pressure 1500Kpa
- Operating temperature range of 1°C to 80°C
- Approved to AS 2845-1
- Compact and Light weight
- Suitable for low Hazard applications.

### TYPICAL INSTALLATION

Model 2NV Dual Check Valves should be installed with adequate clearance and easy accessibility for testing and maintenance and must be protected from freezing. Local codes shall govern installation requirements.

Fittings such as end connectors intended to join alternative pipe systems made from other materials (e.g. plastics) shall also conform to the relevant dimensional and performance requirements of the appropriate Australian, New Zealand, or joint Australian/New Zealand Standard for the alternative pipe system.

Test the assembly at initial installation, after servicing or maintenance to AS/NZS2845.3 and local regulatory authority requirements.

MODEL NO.	A	B	C
2NV20-20F	20mm	36mm	103mm
2NV20-20FM	20mm	36mm	106mm
2NV25-25F	25mm	89mm	144mm